



Welcome to the WEF Students & Young Professionals Community

The mission of the Water Environment Federation's Students and Young Professionals Community (SYPC) is to encourage and facilitate student and young professional involvement in WEF and the Member Associations through professional development and leadership opportunities. The SYPC is made up of students, young professionals, academics, and water quality professionals.



The SYPC develops several regular programs that occur at the Water Environment Federation's Technical Exhibition and Conference (WEFTEC) and throughout the year. These programs drive innovation, enrich the expertise of water professionals, enhance development of leadership skills, facilitate industry networking, and increase awareness of the value of water.

SYPC EVENTS & PROGRAMS

EYPL - The Emerging Young Professionals Leadership Workshop (EYPL) attracts young professionals in an engaging, relevant industry topic, with a focus on non-technical topics that promote professional and leadership development. EYPL is held in conjunction with the Utility Management Conference (UMC), on the day before the YP Summit. Volunteers develop student and young professional-focused workshop content. The workshop is free for all YP Summit attendees.

Mentorship Program - This program aims to connect and facilitate fruitful relationships between experienced WEF mentors and SYPC mentees through regular check-ins, surveys, and feedback mechanisms to ensure both participants are thriving and learning from each other. The program provides rising WEF members with an avenue to connect with leaders outside their own organization to discuss growth in both career, leadership, and personal development.

WEFTEC Community Service Project - Since 2008, the SYPC has organized a community service green infrastructure project held the Saturday before the conference. Volunteer opportunities include helping plan/design/organize the event, secure sponsorships to fund the event, and volunteering the day of the event.

Strategic Leadership Committee - The SYPC Strategic Leadership Committee consists of SYPC leadership, and several ad-hoc members selected by application. Students and new YP members are encouraged to apply to this committee. The purpose of this committee is to plan the future direction of the SYPC, allowing for future growth and preventing the SYPC from becoming stagnant or complacent with current successes. Volunteer opportunities include evaluating current programs, incorporating the goals of WEF's strategic plan, identifying short and long-term needs and making requests of the WEF Committee Leadership Council (CLC).

Student Activities - The Student Activities Community (SAC) provides an opportunity for university students to network among other student chapters and help expand the active network of students in the Federation. Volunteer opportunities include brainstorming ideas to increase and sustain student chapters, increasing opportunities for student networking and idea sharing, and helping drive engagement to meet the needs of current student chapters.

Student Design Competition - The Student Design Competition (SDC) provides university student teams from Member Associations (MAs) around the Federation an opportunity to gain real-world design experience by producing a written and verbal design project. WEF offers wastewater design and environmental design categories to encourage students of all backgrounds to participate. Volunteer opportunities include day-of event coordination, coordination of judging process and logistics, and raising awareness of the competition to increase participation and elevate its status in the water industry.

Water Palooza - Water Palooza is an environmental/water awareness fair that provides education to a local K-9 school in the WEFTEC area. Volunteers set up booths depicting all aspects of water quality/conservation and spend the day teaching students about their passion for water. Volunteer opportunities include helping plan the event logistics, recruiting volunteers for the various booths, and running the event on the day of.

Workshops - The volunteers of this SYPC subcommittee develop student and young professional-focused workshop content for WEFTEC and throughout the calendar year. The subcommittee provides resources and connections for YPs aiming to gain workshop experience, submit abstracts for WEFTEC workshops, and/or improve the quality of their workshops.

YP Summit - The WEF/AWWA YP Summit is a joint leadership conference held in conjunction with the Utility Management Conference (UMC) annually. Young Professionals in the water and wastewater industry from across North America and Canada attend this annual event. Volunteer opportunities include helping plan, organize, secure sponsorships for, and execute the event.

For more information, please contact WEF SYPC Staff Liaisons:

Brad Lovett, Student Liaison | blovett@wef.org

Ama Richardson, YP Liaison | arichardson@wef.org



WEF PROGRAMS FOR STUDENTS AND YPs

Career Fair - Held at WEFTEC annually, this event draws companies seeking to recruit the talent that comes to WEFTEC. This event has provided opportunities for students to brush up on their resume writing and interview skills, and ideally, come away from WEFTEC with job prospects and invitations to interview.



National Water Policy Fly-In - The National Water Policy Fly-In invites water professionals from across the U.S. to help advance key water policy priorities such as sustained growth in federal infrastructure investment, addressing water affordability, supporting water research & development and advancing sound science-based solutions, and making our critical infrastructure more resilient. The Fly-In is co-hosted by WEF, the National Association of Clean Water Agencies, the Water Research Foundation, and the WaterReuse Association. WEF offers scholarships to help offset the cost for young professionals to attend the Fly-In. The scholarship covers the registration cost to attend the National Water Policy Fly-In, which is held during Water Week in Washington, D.C. each April.



Springboard Program - This program increases opportunities for Young Professional WEF members to become involved in WEF, with emphasis on the integration of YPs into the WEFTEC Program Committee at the WEF Winter Meeting, where YPs have the opportunity to help build the WEFTEC program. The WEF YP Springboard Program accepts participants by application only and provides travel expense assistance for the selected YPs to attend the Winter Meeting.



Stockholm Junior Water Prize - The U.S. Stockholm Junior Water Prize (SJWP) was founded in 1997 by the Stockholm International Water Institute (SIWI) to complement the Stockholm Water Prize. The SJWP is the world’s most prestigious award presented to a high school student for a water-research project. Volunteer opportunities include serving as a coach (i.e., event guide) for the finalists during the three-day event or as a judge for the national competition onsite—scholarships are available for both opportunities!

For more information, please contact WEF SYPC Staff Liaisons:
Brad Lovett, Student Liaison | blovett@wef.org
Ama Richardson, YP Liaison | arichardson@wef.org

WEF/SYPC ACRONYMS AND LINGO

BOT - Board of Trustees

CLC - Community Leadership Council

DEI - Diversity, Equity, and Inclusion

EYPL - Emerging Young Professionals Leadership Workshop

HOD - House of Delegates

MA - Member Association

MET - Member Engagement Transformation

SAC - Student Activities Community

SDC - Student Design Competition

SJWP - Stockholm Junior Water Prize

SP - Service Project

SYPC - Students and Young Professionals Community

SYPs - Students and Young Professionals

WEA - Water Environment Association (included in many MA names)

WEF - Water Environment Federation

WEFMAX - WEF Member Association (MA) Exchange

WEFTEC - Water Environment Federation’s Technical Exhibition and Conference

WEFUnity / Hivebrite - Platform used to communicate with members and share volunteer opportunities

YP - Young Professional



FREQUENTLY ASKED QUESTIONS (FAQs):

1. What benefits do I receive as a Young Professional WEF member?

- Professional development and leadership opportunities within your MA and the national WEF membership network
- WEF's programs, resources, and networking opportunities provide the keys to launch a successful career in the water and wastewater field
- Students:
 - i. Discounted member dues
 - ii. Eligibility for the \$25,000 Canham Scholarship
 - iii. Free registration for WEFTEC, WEF conferences, and WEF webcasts
 - iv. Save 50% off the member price on WEF technical manuals and books
 - v. Access to WEF's online Career Center
- YPs:
 - i. Conference and event registration discounts (some restrictions may apply)
 - ii. Discounted member dues
 - iii. Access to WEF's online Career Center
 - iv. Access to innovative technical information
 - v. Access to potential industry regulations
 - vi. Ability to learn more about the industry you are a part of

2. What is the difference between my MA and WEF?

The Water Environment Federation (WEF) is an international network (i.e., Federation) of water and wastewater industry professionals. The Federation is comprised of local/regional networks called Member Associations (MAs). Individual members of WEF must therefore—and firstly—be members of their local MA, in order to become members of WEF. In this way, local MA membership provides the channel to national membership at the WEF level.

3. How do I approach my employer about the cost and time commitment of WEF (dues, meetings during work hours, etc.)?

The SYPC provides attendance justification letters for SYPCs attending WEFTEC and YP Summit. WEF Staff Liaisons can also provide official WEF letters of support, as needed.

- **Student Liaison:** Brad Lovett | blovett@wef.org
- **YP Liaison:** Ama Richardson | arichardson@wef.org

4. Are there any requirements to be a member—such as being in a committee or attending a certain number of meetings/events?

Being up to date on your WEF membership and MA dues. Apart from these two items, members should agree to and follow the WEF Code of Conduct; there are no other requirements.

5. What makes WEF different than other similar organizations and why should I choose WEF?

- WEF is a not-for-profit technical and educational organization of more than 30,000 individual members and 75 affiliated Member Associations representing water quality professionals around the world. Since 1928, WEF and its members have protected public health and the environment.
- WEF provides water quality professionals around the world with the latest in water quality education, training, and business opportunities. WEF's diverse membership includes scientists, engineers, regulators, academics, utility managers, plant operators, and other professionals. WEF uses this collective knowledge to further a shared goal of improving water quality around the world.
- WEF's SYPC is one of the most active and engaging communities in the water industry!



FREQUENTLY ASKED QUESTIONS (FAQs):

6. Do I have to be an active member at both WEF and my Member Association?

To be active in the WEF SYPC Community, you must be a WEF member with up-to-date dues payments. If you are unsure of your membership status or would like to join WEF, please email membership@wef.org. WEF members must also choose a local Member Association (MA) when joining. Numerous opportunities for professional development and networking within the water quality sector are available to you through WEF's SYPC and your local MA. Your level of involvement within either entity (or both) will be determined by your individual preferences and goals.

7. Does WEF provide any assistance in getting WEF SYP members to their events (i.e., Springboard, Fly-In, YP Summit, WEFTEC, etc.)?

Yes, scholarship opportunities exist for the following programs and are subject to an application process:

- i. Springboard Program (all expenses paid, per allotted finalist stipend)
 - ii. Stockholm Junior Water Prize: Coaches and Judges
 - iii. Student Chapter of the Year Award recipients
 - iv. WEF Fly-In YP scholarship recipients
 - v. See question #1 for additional discounts and cost-savings provided to SYPs
- Contact WEF Staff Liaisons for more information on the above items

8. What is the typical time commitment for SYPC members?

All members are invited to join the community's monthly one-hour call over Zoom. All other time commitments depend on which and how many subcommittees (per the previous listing) a member is involved in and leadership roles (if any) they have volunteered or been selected for. The best way to get involved (without overcommitting) is to attend the monthly SYPC calls, look out for calls for volunteers during the monthly SYPC call or on WEFUnity, and to direct any questions you may have to committee leadership or WEF staff. SYPC subcommittees are always welcoming new volunteers.

9. How can I get involved?

Join the online platform of WEF's Students and Young Professionals Community (SYPC) via WEFUnity: <https://community.wef.org/>

- Once you create your profile and login, click on "Communities" type "Students and Young Professionals" into the search bar, and click "Join" under the community's thumbnail.
- Join the SYPC Monthly Calls on Zoom – this is the best way to stay informed and hear about what's going on in WEF SYP Programs. (The meeting link is available on WEFUnity; you may also contact WEF Staff for more information.)
- Get plugged into the programs listed above by contacting WEF Staff or the SYPC leaders.

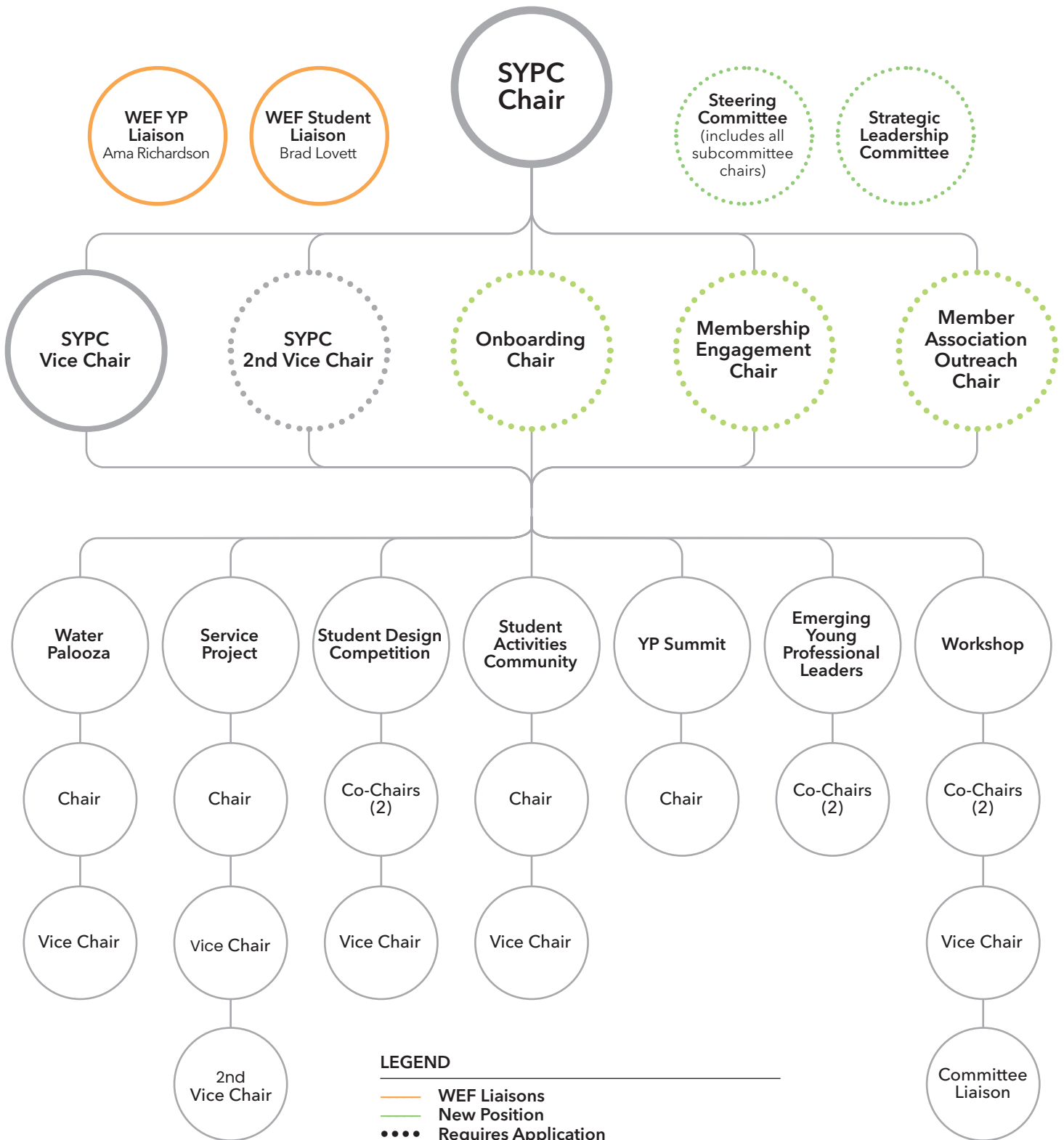


Ama Richardson (she/her) is the **WEF Young Professionals Liaison** on the Association Engagement Team. In this capacity, she serves as a staff liaison to WEF's SYPC and as volunteer management lead and budget manager of young professional programs/activities, subcommittees, and projects for WEF YP members and prospective members. She was born in Ghana, West Africa and has lived in Northern Virginia for over ten years.



Brad Lovett (he/him) is the **WEF Student Liaison** on the Association Engagement Team. In this capacity, he serves WEF Student Chapters, supports the WEFTEC Student Design Competition, and works with WEF Member Associations to organize the annual U.S.A. Stockholm Junior Water Prize Competition. His background is in education and non-profit management. He lives and works out of Tulsa, Oklahoma.

SYPC LEADERSHIP STRUCTURE



LEGEND

- WEF Liaisons
- - - New Position
- Requires Application

Some subcommittee leadership roles may require an application - at subcommittee discretion.